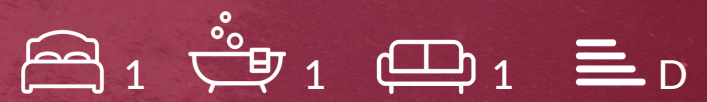


Guildford Road, Canterbury, CT1 3QD

£550 Per Calendar Month

Sally Hatcher
estates



Guildford Road

Canterbury CT1 3QD

Nestled on Guildford Road in the charming city of Canterbury, this delightful four-bedroom shared house presents an excellent opportunity for those seeking to live with other professionals.

This house is particularly suited for individuals looking for a double bedroom available for single occupancy, adhering to HMO regulations. With a bathroom conveniently located on each floor, residents will enjoy the ease of access and privacy. The shared fully equipped kitchen is ideal for preparing meals, while the inviting sitting room offers a warm space to unwind after a long day.

Outside, the communal garden provides a lovely area for residents to enjoy the fresh air and perhaps indulge in some gardening. Additionally, on-street parking is available, making it convenient for those with vehicles.

This property is not only a comfortable home but also a gateway to the rich history and culture of Canterbury, with its stunning architecture and vibrant local amenities. Whether you are a professional or a student, this house offers a welcoming environment in a prime location. Do not miss the chance to make this charming property your new home.

Rent to include Gas, Electric, Water, Council Tax and Broad Band

Single occupancy only

Deposit £634.61

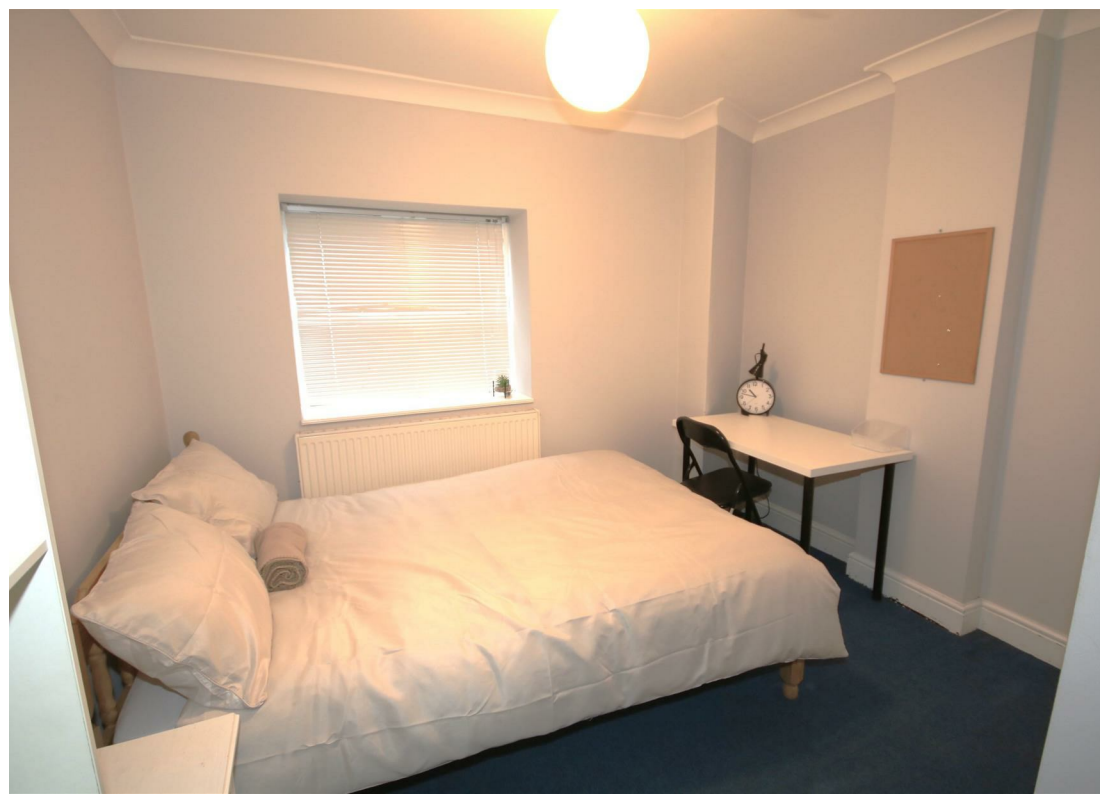
Rent £550 This can be paid anytime



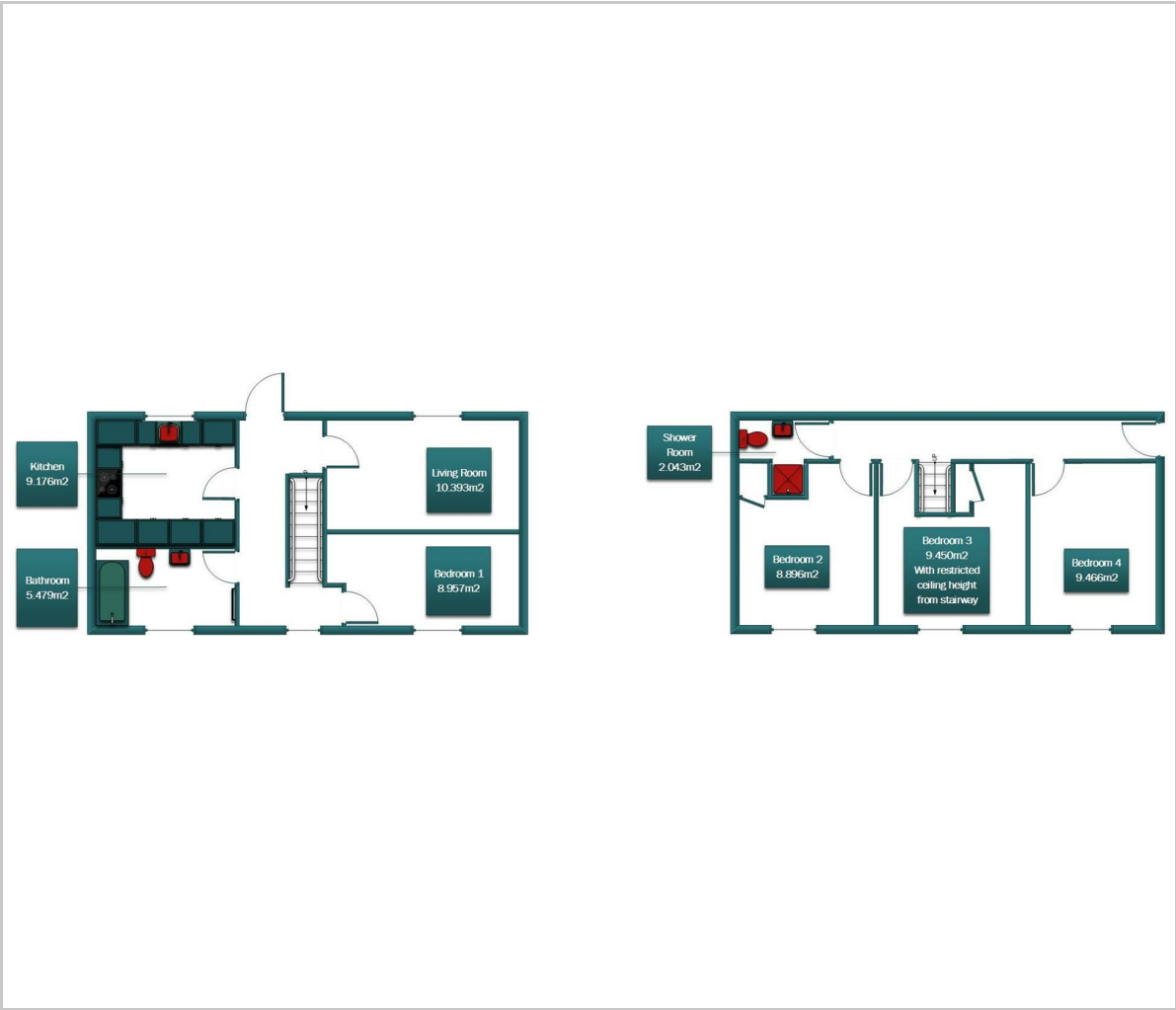


until your tenancy begins (EXCLUDING Holding Deposit)
 No pets
 Available from February 2026
 Furnished
 On street parking

Please refer to the fee's tab on our website (www.sallyhatcher.co.uk) for all information on fee's and deposit options



Floor Plan

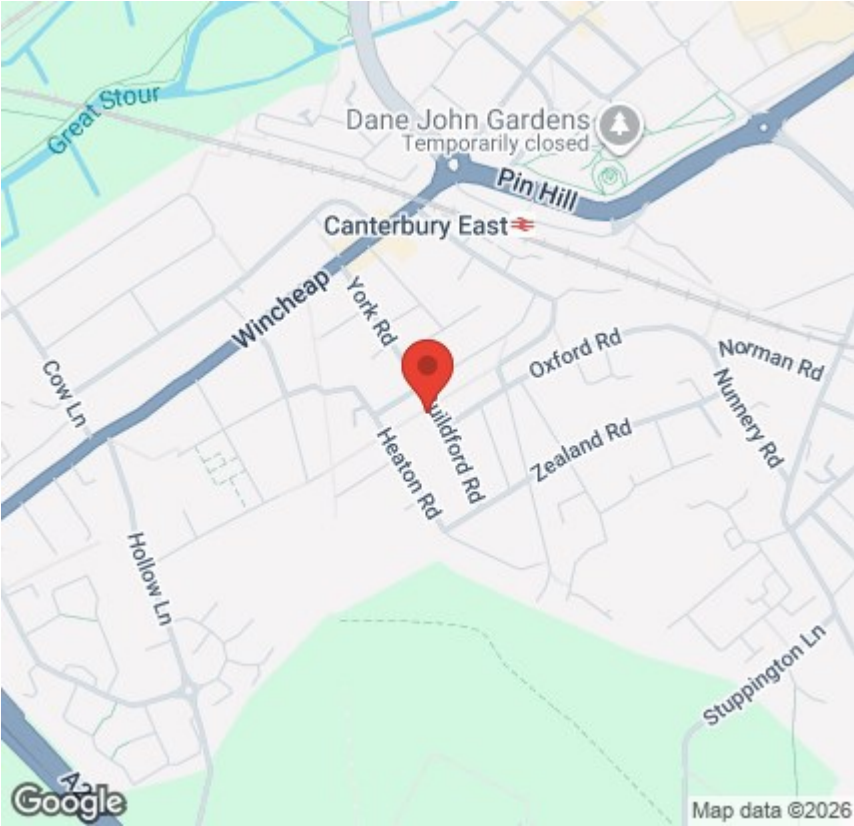


Viewing

Please contact us on 01227 733888 if you wish to arrange a viewing appointment for this property or require further information.

These particulars, whilst believed to be accurate are set out as a general outline only for guidance and do not constitute any part of an offer or contract. Intending purchasers should not rely on them as statements of representation of fact, but must satisfy themselves by inspection or otherwise as to their accuracy. No person in this firms employment has the authority to make or give any representation or warranty in respect of the property.

Area Map



Energy Efficiency Graph

